

IG08 8 port Gigabit panel ethernet switch module 100/1000M copper TX power over ethernet POE PSE

IG08 is a high quality reliable 8 port gigabit ethernet switch with POE function .It provides 8 10/100/1000mbps auto-sensing MAC and PHY.Power voltage input range DC 5-15v.

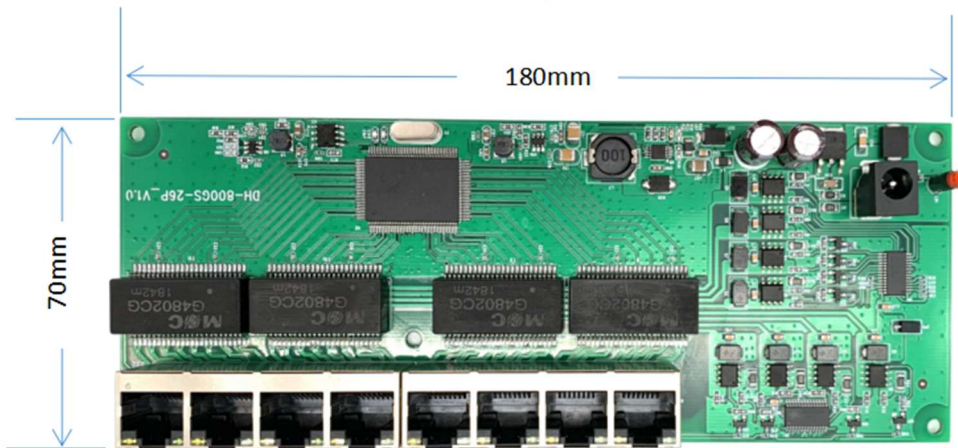
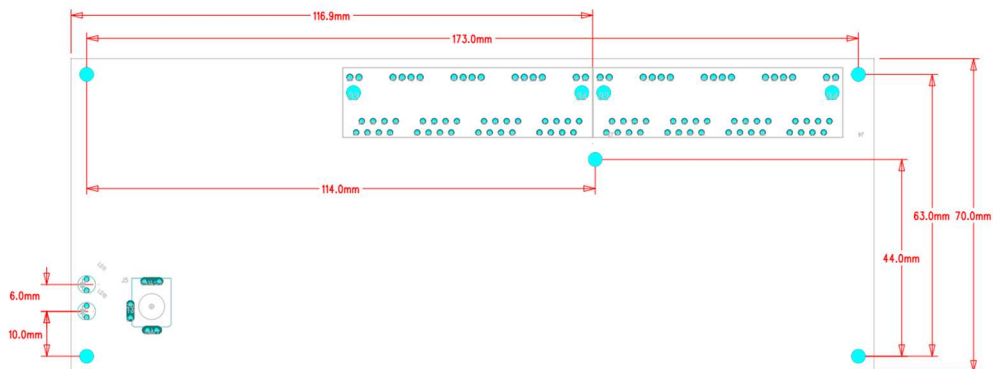
It's widely used for soho/factory/hotel/school/campus/building etc network deployment engineering project.

Features

1. All 8 10/100/1000mbps MAC/PHY inside
2. Comply to IEEE 802.3, IEEE 802.3u, IEEE 802.3x, IEEE802.3ab
3. Flow Control: Full-duplex: IEEE 802.3x, Half-duplex: back pressure.
4. Auto MDI/MDIX.
5. Unmanaged,plug n play,no need configuration
6. Store-and-forward.
7. All ports support wire speed store-and-forward, jumbo frame transmission.
8. LED indicators monitor working status,supporting simple trouble shooting
9. No housing case
10. Low power consumer under 3W



Dimension (mm)

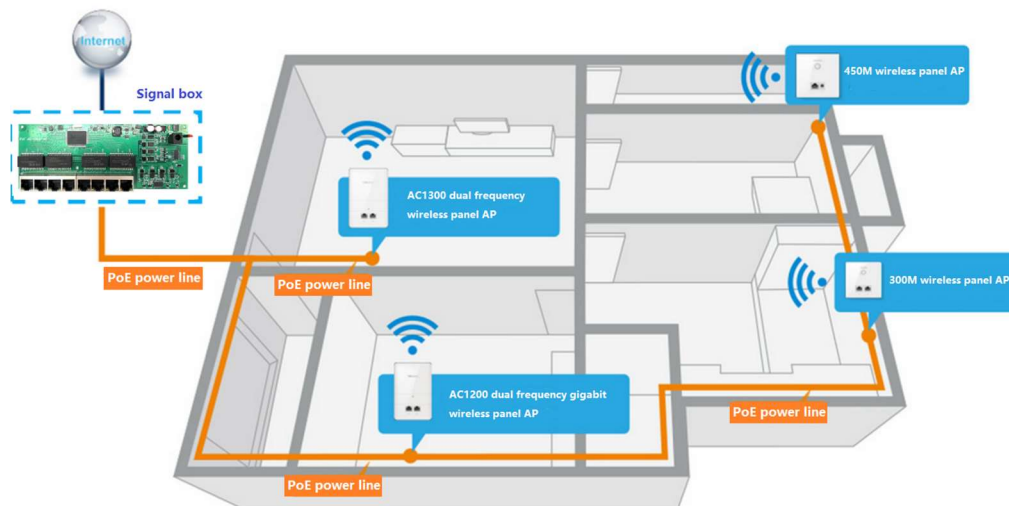


REALTEK Gigbit Ethernet switch one-stop turn-key service

Gigbit Unmanaged switch	RTL8367	RTL8367N-VB:5GE RTL8367S:5GE+1G SPF
	RTL8370	RTL8370N-VB:8GE RTL8370MB:8GE+2G SFP
	RTL8382	RTL8382+RTL8218B:16GE+2G SFP RTL8382+RTL8218B*2:24 GE+2G SFP RTL8382+RTL8214QF*4:8GE+18G SFP

Gigbig Managed switch	RTL8380M	8GE+2G SFP
	RTL8381M	12ge+2G SFP
	RTL8382M	RTL8382M+RTL8218B:16GE+2G SFP RTL8382M+RTL8218B*2:24GE+2G SFP
	RTL8391M	RTL8391M+RTL8218B*3: 24GE+4G SFP(combo) RTL8391M+RTL8214QF*6: 24G SFP+4G combo
RTL8393M	RTL8393M+RTL8218*6: 48GE+4G SFP or combo	

Application



Order information

Product Description
8-port Gigabit Panel POE ethernet switch

Order Code
IG08